

# Quick Start Guide

KIT MODEL  
SNK-D85121BF  
NVR MODEL  
SNR-D5401

## ALL-IN-ONE SECURITY SYSTEM **SAMSUNG** WISENET

Thank you for purchasing the NVR Security System.  
Follow the simple steps in this guide to set up and start using your new system.



If you have any questions or need help installing your new product, please contact our free technical support.

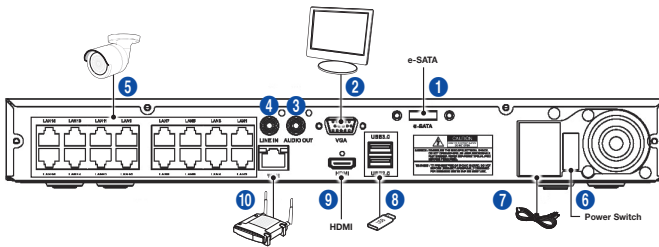
Telephone: 1-877-349-3149  
9am - 9pm EST, Monday - Friday  
Web: [www.samsungsv.com](http://www.samsungsv.com)

### □ Front



### □ Back

- The appearance of power adaptor differs depending on sales region.



Part Name	Function
① e-SATA	Connect to e-SATA HDD
② VGA Output	Connect to VGA monitor
③ AUDIO OUT	No Function
④ LINE IN	No Function
⑤ LAN Port	LAN Port for POE Power supply
⑥ Power Switch	On/Off
⑦ Power Supply	Connect to power cable
⑧ USB	USB port for upgrade or backup
⑨ HDMI Port	Connect to HDMI monitor
⑩ WAN Port	WAN port for internet

# Startup Wizard

After the NVR Startup is completed, the Startup wizard will be displayed. If you do not want to make any additional changes to your settings when it reboots, check "To disable Startup Wizard after reboot".

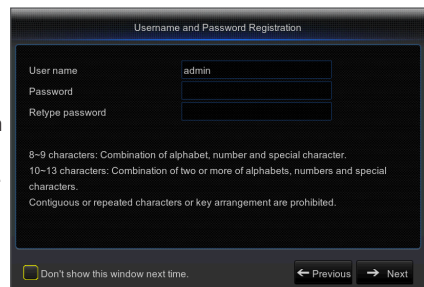
Wizard setting menu includes Homepage, Network setup, IPC setup, Record Schedule and hard disk maintenance.

- Homepage
- Admin password setting
- Hard drive management
- Network setup
- IPC setup
- Video recording Schedule
- General system configuration
- E-mail setting
- DDNS setting



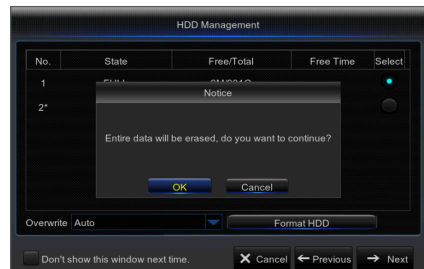
## 1. Set Admin Password

Please create a username and password for your NVR. Password MUST be 8~13 characters long. When password is 8~9 characters long, it should be with at least a combination of letters, digits and special symbols. If it is 10~13 characters long, it should be with at least a combination of two types of characters. 4 or more contiguous or repeated characters or key arrangement are prohibited, for example 1111, 1234, abcd, qwerty. Retype password: Re-enter the password set above.



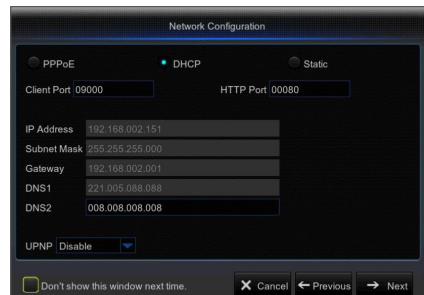
## 2. Hard Drive Management

New hard drive(s) connected must be formatted before use. Upon connection, it will indicate to format new hard drive. Click on "Select" to select the unformatted hard drive. Click on "Format HDD" to pop up the user login window and enter the password to log in. A notice window will indicate "Entire Data Will Be Erased. do You Want To Continue?". Click "OK" to format the disk. When the progress bar is complete, the formatting process is completed.



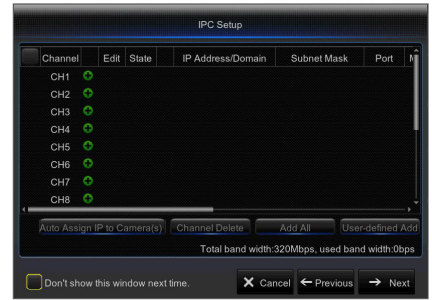
## 3. Network setup

In DHCP mode, the router will automatically allocate IP address to the NVR. If the NVR fails to obtain an IP address, refer to the NVR Router Guide. If the problem still cannot be resolved, contact technical support.



#### 4. IPC Setup

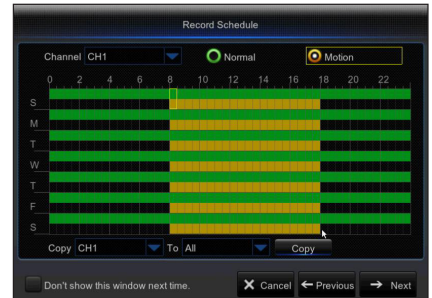
User may add and delete IPC.



#### 5. Video Recording Schedule

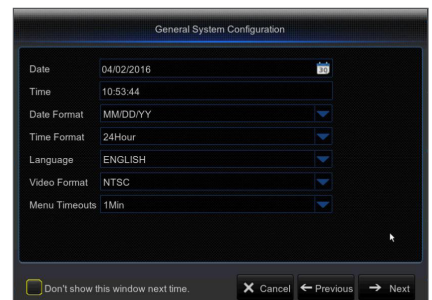
Select the channel and the date to be set. One week's schedule can be set. The record "schedule" of the current channel can be copied to any other channel or all channels.

- If there is no color in the record menu and record search, there is no recording saved.
- "Green" stands for normal record and "yellow" stands for motion record.



#### 6. General System Configuration

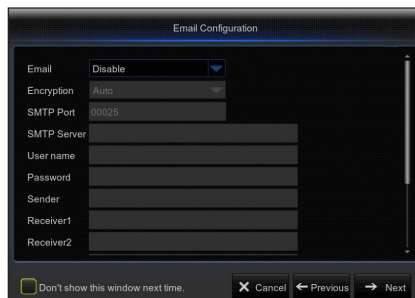
You can set date, time, date format, time format, language, video format and menu timeouts.



## 7. Email Setting

Receive or Send NVR alarm email and set parameters like email address, SSL, email enable, and interval.

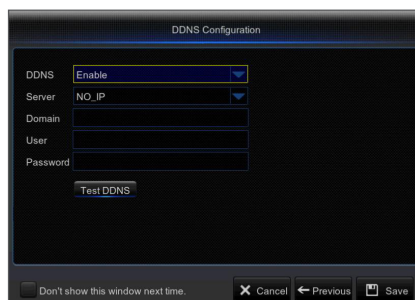
- **Encryption:** Disable, SSL, TLS and Auto optional. Auto means it can detect the encryption type automatically. It is recommended to set the encryption type as Auto.
- **SMTP Port:** Mail sending port used by SMTP (Simple Mail Transfer Protocol). Server is generally Port 25 or Port 465 when SSL is used by Gmail.
- **SMTP Server:** Enter the address of the server for the mailbox in use.
- **User Name:** Enter a server to connect to. For example, email "aaa@gmail.com" should correspond to server "smtp.gmail.com"
- **Password:** Enter the password of the SMTP server user.
- **Sender Address:** Sender's email address, which must correspond to the server used. For example, email "aaa@gmail.com" should correspond to server "smtp.gmail.com".
- **Receiver 1/2/3:** Recipient's mail address, used to receive alarm image and message from NVR side. If system alarms continually and sends email images frequently, save the images to another location or remove them, so as to avoid excessive space occupation and thereby affect your normal use of mailbox.
- **Time Interval:** A mail will be sent every three minutes by default. If the time interval for mail notification is set too short, email server may deem mails as junk mails, so they cannot be transferred normally.
- Click on "Test Email". If connection succeeds "Test E-mail" will be sent out.



## 8. DDNS SETTING

User may set DDNS under network type of PPPoE/Static/DHCP after applying dynamic domain service. User may remotely access NVR through domain by using browser in the form of http://applied domain: mapped HTTP port number when using DDNS domain name to access NVR.

- **Server address:** Select dynamic domain name server provider. Available domain name servers (HANWHA-SECURITY, DDNS\_3322, DYNDNS, NO\_IP, CHANGEIP, DNSEXIT)
  - **Domain name:** Dynamic domain name of the host obtained from dynamic domain name service provider upon registration, for example, nvr2016.no-ip.org.
  - **User Name:** The user name registered upon application for dynamic domain name.
  - **Password:** The password set upon registration.
  - Click on "Test DDNS". If connection is made, it will indicate "DDNS Test is Successful!". Perform remote access to the NVR by using dynamic domain name, for example, http://ddns.hanwha-security.com/snb5000: HTTP port number (e.g. 19010)
9. Click on "Save" to finish setting of startup wizard.





## Popup Menu

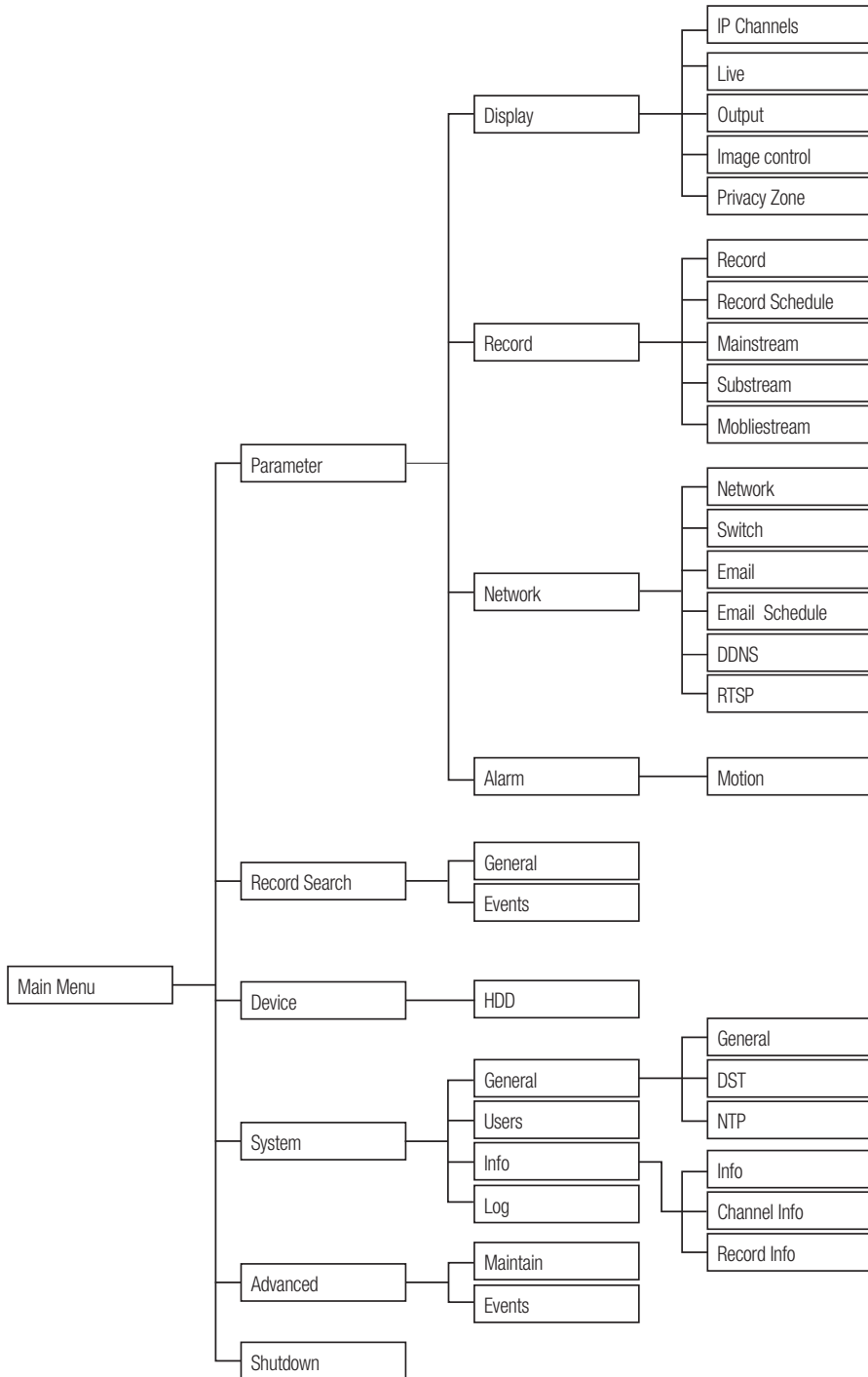
After completing the system initialization, right click on your mouse on the preview interface or slide the mouse to the bottom of screen to open the Pop-up Menu. Here, you could set parameter settings and switch between Main Menu, Multi-Pics, Record Search, Sequence and Streams.

The options in the pop-up menu may vary according to different parameter settings. The options in the menu will be explained in detail in the following chapters.




Component Name	Function
1 Main Menu	Access the main menu.
2 Manually Lock Screen	Sign out or access sign-in page.
3 4-Channel Layout	Display four channels of video/ Display nine channels of video/Display twelve channels of video/ Display sixteen channels of video
4 9-Channel Layout	
5 12-Channel Layout	
6 16-Channel Layout	
7 More Layout	Display more channels of video.
8 Stream Switch	Switch between Main Stream and Sub Stream.
9 View Image Quality	Switch among Realtime, Balanced and Smooth.
10 SEQ	Start or stop SEQ.
11 Playback	Replay video recorded.
12 Information	System Information.
13 Record	Enable or disable manual recording.
14 Instant Playback	Display channel name Quick playback of video of last 5 minutes
15 Zoom	Hold and drag mouse cursor to select a frame of current video to zoom in
16 Color	Adjust the color of video

# Main Menu Guide




## Main Menu

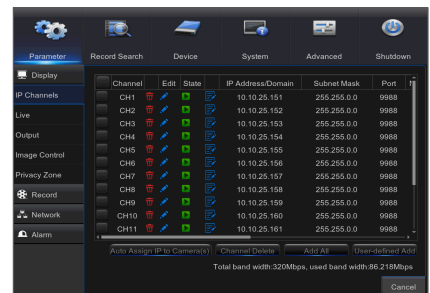
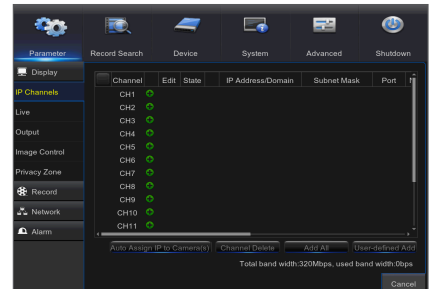
To enter the main menu screen, left click on the mouse on LIVE mode or press the **[Menu]** button on remote controller. You can also click  icon on the toolbar to enter the main menu screen as shown in Picture on the left.

Menu will be locked if left idle and you will have to enter the password again.

In Main Menu mode, you can change settings for Parameter, Record Search, Device, System, Advanced and Shutdown.

Go to "Main Menu" → "Parameter" → "Display" → "IP Channels" to enter into the interface.

- **Channel** : IPC camera channel.
- **Edit** : Modify the name of IPC and location of channel name, change to other IPC or protocols, etc.
- **State** : Status of IPC, on-line or off line
-  : Modify IP address of IPC.
- **IP Address/Domain** : IP address of the IPC connected.
- **Subnet Mask** : Subnet mask of IPC.
- **Port** : Client port of IPC.
- **Manufacturer** : Manufacturer of IPC.
- **Device type** : Device Type of IPC.
- **Protocol** : Access protocol for IPC connected to NVR.
- **MAC Address** : MAC address of IPC.
- **Software Version** : Current firmware version of IPC.
- **Auto Assign IP to Camera(s)** : Auto Assign IP to IPC.
- **Channel Delete** : Select one channel and click Channel Delete to delete IPC.
- **Add All** : Add All IPC.
- **User-defined Add** : To add the IP cameras as user defined.




## Network

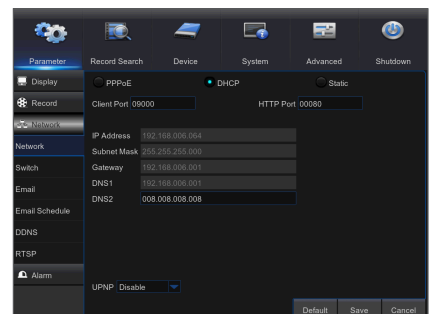
Go to "Main Menu" → "Parameter" → "Network" to enter into the interface.

Select the type of network connection (PPPoE, DHCP, Static) and set Port, then user may remotely control the monitoring, recording, playback or backup of the NVR through the network.

Take DHCP as an example. In this mode, the router automatically assigns IP address for the NVR. After restarting the NVR or DHCP server, the IP address obtained by the NVR may be different. As a result, user should check the IP address and port number for each remote access of the NVR. The operation procedure is as follows:

1. Select DHCP, click Save and refresh the NVR. Input Client Port and HTTP Port (the two values must not be the same).
2. Set obtained IP address of the NVR and the mapping port.
3. Remotely visit the NVR by IP address: http://Public network IP: HTTPport number (such as 00080)
  - For PPPoE, Static and DHCP, after setting IP address of NVR, the extranet port shall be mapped on the router before visiting NVR through public network.

-  Save after setting to make effective. If there are multiple NVR in a LAN, make sure their MAC addresses are different.

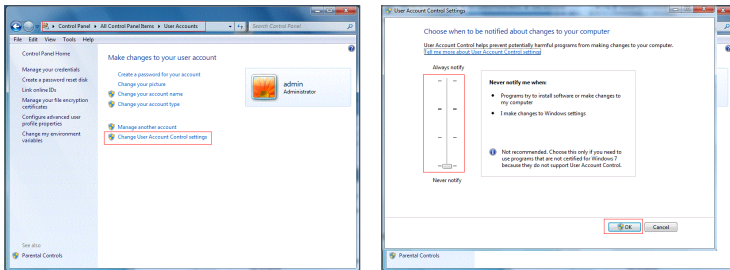


# Web Application Manager

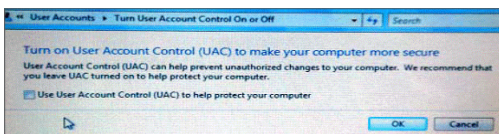
## Download and Installation of Plugin.

Windows 7 : You may need to setup the user authority for the remote controler you may not beable to back-up your hard drive or record.  
Windows Vista : Start → Setup → Control Panel. Set user authority in control panel shown on the picture below. Remove the check "✓" in front of the option "Use UAC to help protect your computer" and click OK to confirm.

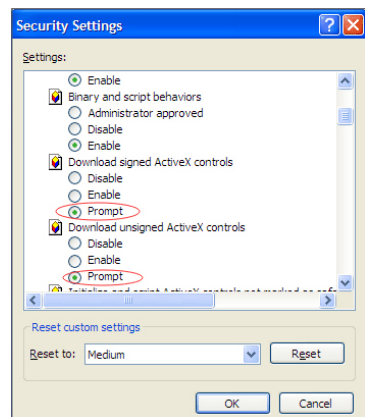
### WIN7



### Vista

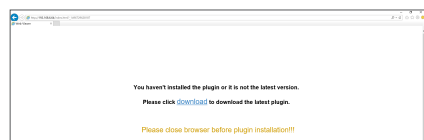


- If the web plugin is not downloaded successfully, please check if your browser's safety level or firewall setting is too high. Please open IE browser → [Menu Bar] Tools → Internetoptions → Security → Internet → Custom level → Enable the following options.

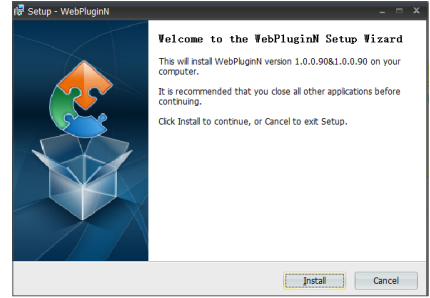


## Download and installation of plugin for IE

Run your web browser as administrator and input the IP address and HTTP port of NVR, such as: http://192.168.1.200:80.



Save plug in, and then click Install on pop-up box of the Setup-Webplugin to install. Restart the browser, and then enter the NVR IP address plus HTTP port, such as `http://192.168.1.200:80`, to log in.



## Download and Installation of plug in for Safari

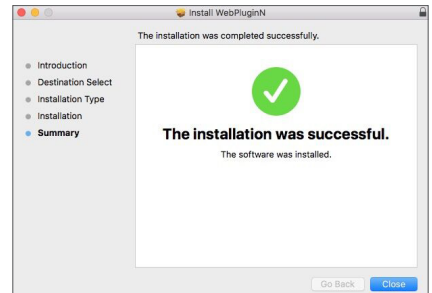
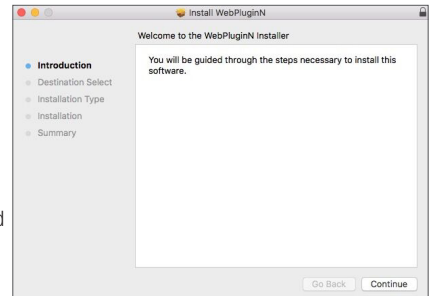
Input the IP address and HTTP port on Safari, such as `http://192.168.1.200:80`, and then click download to download the plug in. Click Download icon to have the plug-in 'WebPluginN.dmg' downloaded. Double click 'WebPluginN.dmg'. Double click 'SurveillanceClient.pkg' and then click Continue and Install. Enter user name and password to install, then click Close to finish installation. Restart the browser, and then enter the NVR IP address plus HTTP port, such as `http://192.168.1.200:80`, to log in.



- The above instructions are for first time installations. You can use the same plug-in for IE and Google Chrome. If plug-in for windows OS was installed on IE or Google Chrome once, you need to use IE which needs to be run as administrator. Use Google Chrome to log in to NVR.

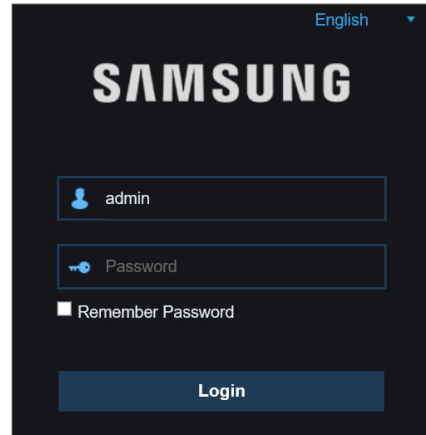
If you use Google Chrome to log in, please use Version 41 or lower. If you use V42 to V44 to log in, you need to enable NPAPI plug-ins. You can enter `chrome://flags/#enable-npapi` on URL bar of Google Chrome to find and enable NPAPI. Please note that it doesn't support V45 or above.

When you do a firmware upgrade, you have to re-download and re-install the plug-in. Based on different situations, it may not be able to install the plug-in through browsers. In this case, please copy and install the plug in on the CD attached (Web\_plugin\_Windows\_YYYY\_MM\_DD.exe for Windows system, and SurveillanceClient\_Mac\_YYYY\_MM\_DD.dmg for Mac).



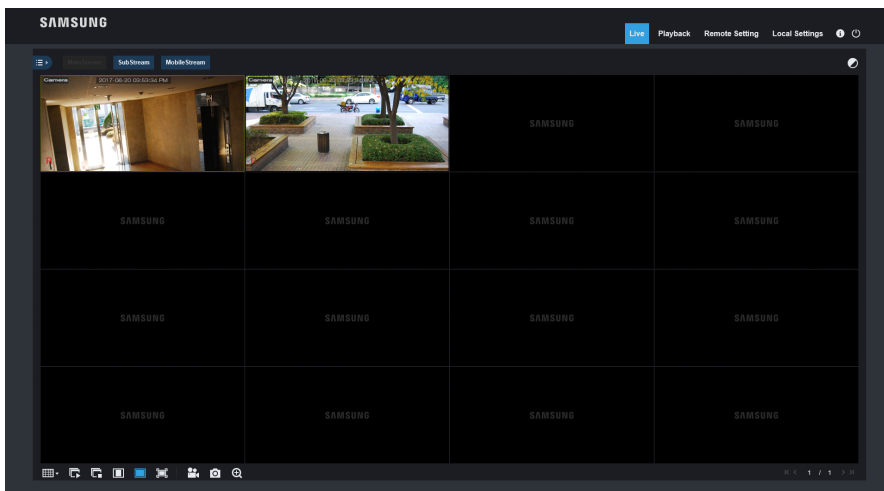
## □ View NVR Remotely Through Browsers

After the plug-in is installed and the IP address and HTTP port is entered, you can go to the following log in interface. Enter the username and password you created on the local NVR, then select Sub Stream or Mobile Stream (In general, select Sub stream for intranet and Mobile stream for extranet), and select language. Click 'Open All Channels Preview' to open all live pictures. Press Login to visit NVR remotely.



## | Live Interface

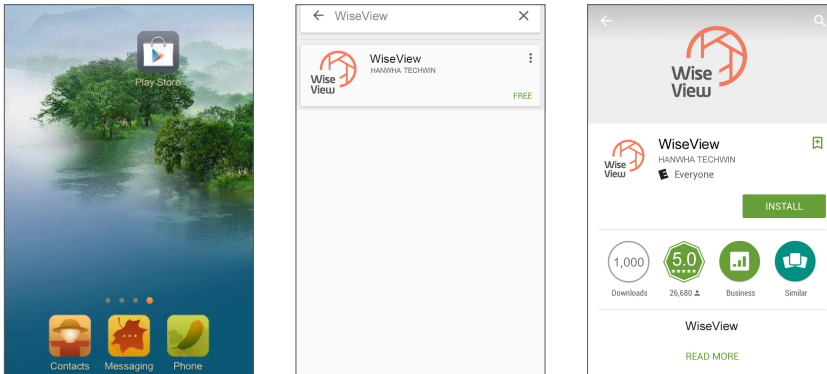
Log in and go to live view.



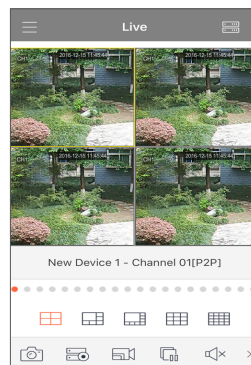
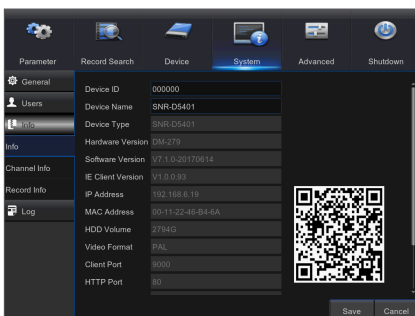
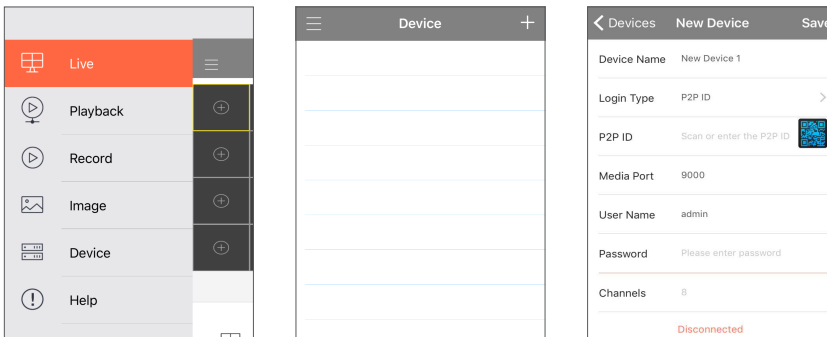
# Mobile App

## Android Phones/Tablets

1. Open Play Store to search for WiseView and click "INSTALL".



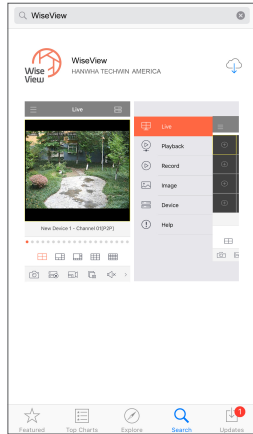
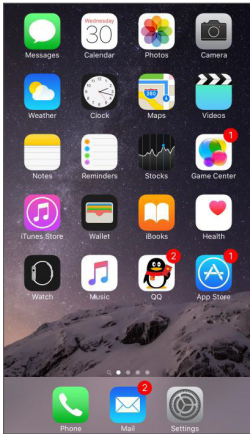
2. After installation, open WiseView and select "Device". Then click [ + ] to add new device. Scan QR code under Information page. Then input client port, user name and password, and then click Save to log into the NVR.



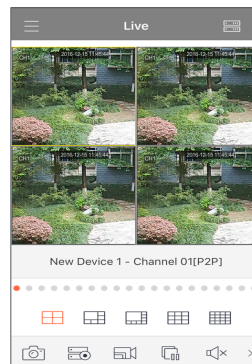
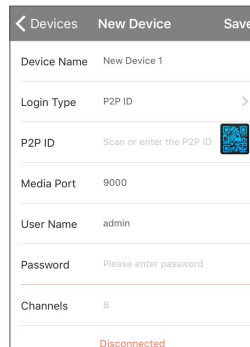
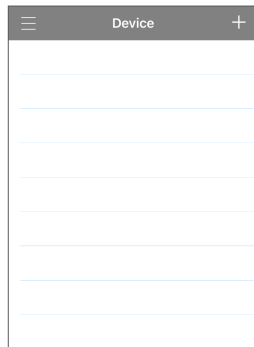
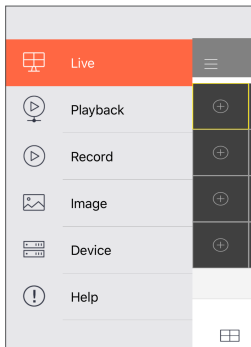


## □ iPhone/iPad

1. Open App Store to search for WiseView, and click icon [  ] to install.



2. Open WiseView, and go to Device. Click [  ] to add new device. Scan QR code under Information page. Then input client port, user name and password, and then click Save to log into the NVR.



# MEMO

.....

.....

.....

.....

.....

.....

.....

.....

.....

.....

.....

.....

.....

.....

.....

.....

.....

.....

.....

.....

.....

.....

.....

.....

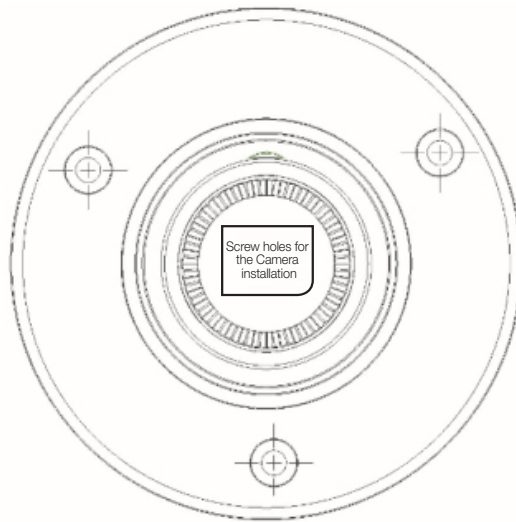
.....

## Camera Installation Template

To make the camera installation easier, you can tear off this page and use it as reference.

# TEMPLATE

This template is used to install the camera on the wall



**CAMERA FRONT**



# MEMO

A series of horizontal dotted lines for writing.

